

Art2Muse

A vibrant art gallery

Located in the heart of Double Bay, Art2Muse Gallery attracts locals, designers, national and international art lovers who can also view and purchase artworks online. Established in 2001 by Katrina Hampton, Art2Muse Gallery represents a diverse range of artworks from 45 established artists at an affordable price. The gallery has been operating in Double Bay since 2008 with an exciting program of regular exhibitions and provides ongoing personalised service. In November 2014 Art2Muse Gallery was the first Australian gallery to be invited to participate in the Contemporary Istanbul Art Fair in Turkey.

We offer a home consultation service to advise on artworks. An initial visit to your home or office will include photographing the space and discussing your preferences. We will then produce a catalogue of recommended artworks superimposed on your walls as a preview before trying the pieces in your home. The \$99 consultation fee is then deducted from your first art purchase.

Here is a selection of available artworks by Catherine Hickson. Please feel free to contact us for high resolution photographs and catalogues of artworks you are interested in and to discuss your requirements.

Katrina Hampton

Director Art2Muse Gallery

Katrina Hampton
Art2Muse Gallery
www.art2muse.com.au
357 New South Head Rd Double Bay Sydney
P. O. Box 211 Woollahra NSW 1350 Australia
Phone: 0424 809 849 Email: katrina.hampton@art2muse.com.au

Catherine Hickson

Catherine Hickson is a still life oil painter with studios in North Bondi and the Hunter Valley. She has been exhibiting since 2005 and has been a finalist in the Paddington art prize and the Waverley Woollahra Art Prize.



Upcoming exhibition 'Soft Country' at Art2Muse Gallery 31 March – 13 April 2020

Soft Country

I grew up in the bush. I love being outside. My practice usually begins with sketching en plein air. I then move to paint in oils in my studio. I work from my sketches, photos and my visual memories and feelings. I let the paintings take me back into the landscape. This body of work collects places I have been, places where I have sketched, places that hold space in my visual memory. Places I love to remember.

- Catherine Hickson, 2020

Education

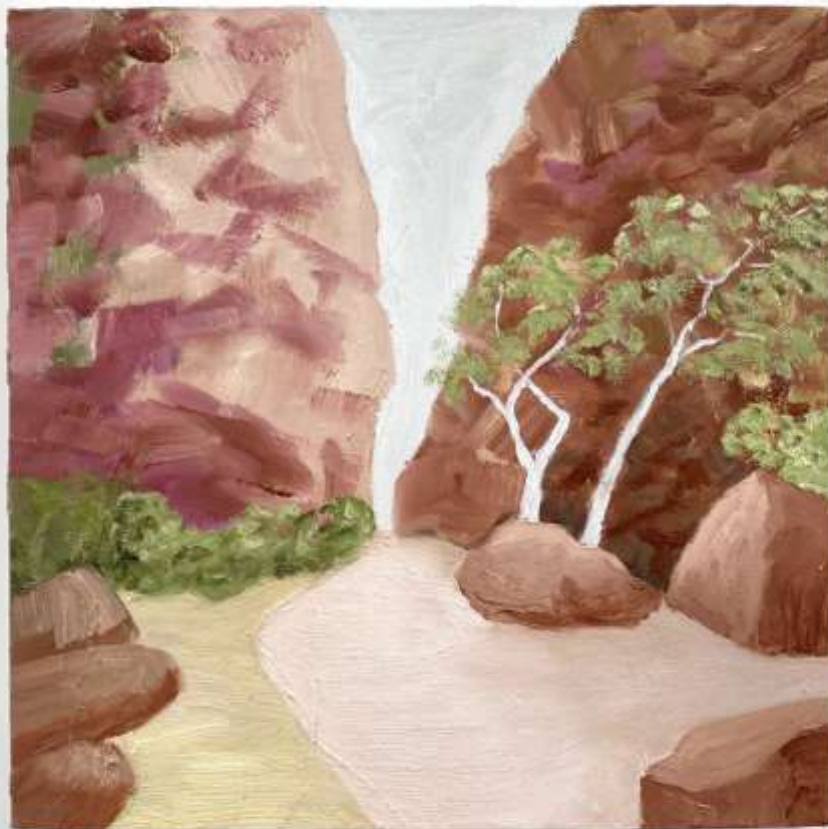
- 2014 Master of Art History / Museum Studies, University of Sydney
- 2001- 2004 Oil Painting, Charlie Sheard Studio School, Sydney
- 1999 Drawing, National Art School
- 1999 Diploma of Languages French, University of Sydney
- 1998 Diploma of Education with LOTE, University of New England
- 1985 Diploma Graphic Design, School Visual Arts, Sydney
- 1981 BA Communications, University of Technology, Sydney

Exhibitions

- 2018 'Still Life: Shifting Perspective', Art2Muse Gallery, Sydney
- 2017 "The Paris Paintings" Michael Reid Murrurundi
- 2016 "The Brunswick Drawings" Michael Reid Murrurundi
- 2016 "Landlines", Curve Gallery, Newcastle, group show
- 2016 "Still Life", Michael Reid Murrurundi, solo
- 2015 Recent work, Michael Reid Murrurundi, solo
- 2015 "Catching Colour II", Michael Reid Murrurundi, solo show
- 2014 "Catching Colour I" Michael Reid Murrurundi, solo show
- 2012 Recent Work, Maunsell Wickes Gallery, Sydney, solo show
- 2011 My sister's garden, Maunsell Wickes Gallery, Sydney, solo show
- 2009 Still Life, Charles Hewitt Gallery, Sydney, solo show
- 2008 Recent Work, Charles Hewitt Gallery, Sydney, solo show
- 2006 Paddington Contemporary Gallery, Sydney, solo
- 2005 Paddington Contemporary Gallery, Sydney, solo

Awards

- 2017 Finalist 9x5 Landscape Prize Waverley Woollahra Art School
- 2016 Finalist Waverley Woollahra Art Prize
- 2009 Finalist Paddington Landscape Prize
- 2004 Finalist Waverley Woollahra Art Prize



Larapinta I

\$850 Oil on canvas framed, 30 x 30cm



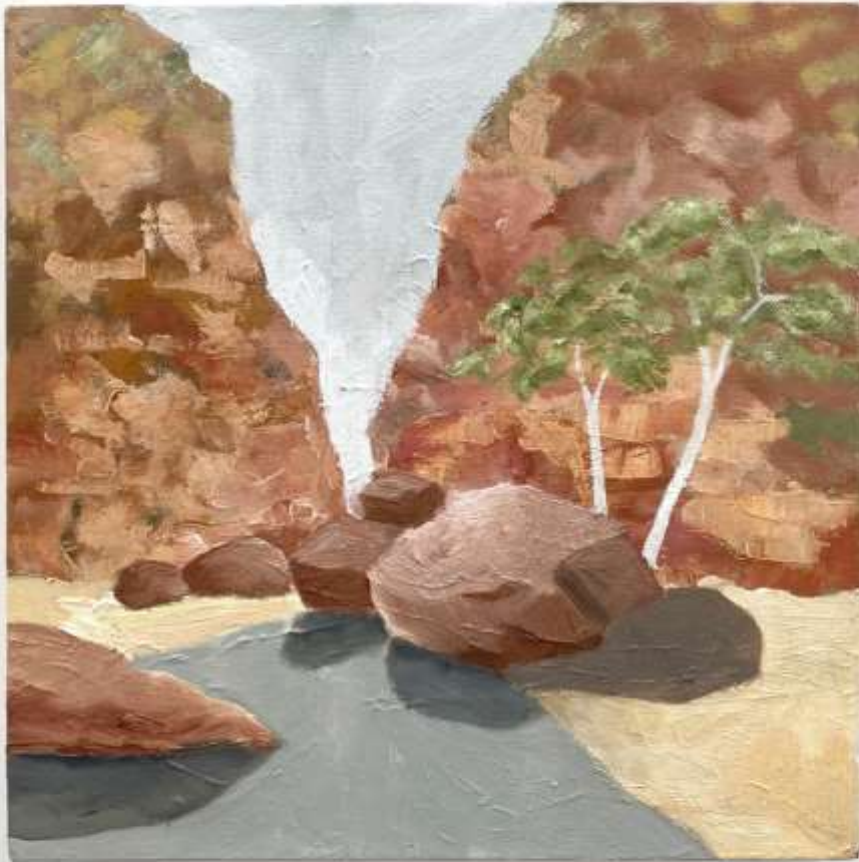
Larapinta II

\$850 Oil on canvas framed, 30 x 30cm



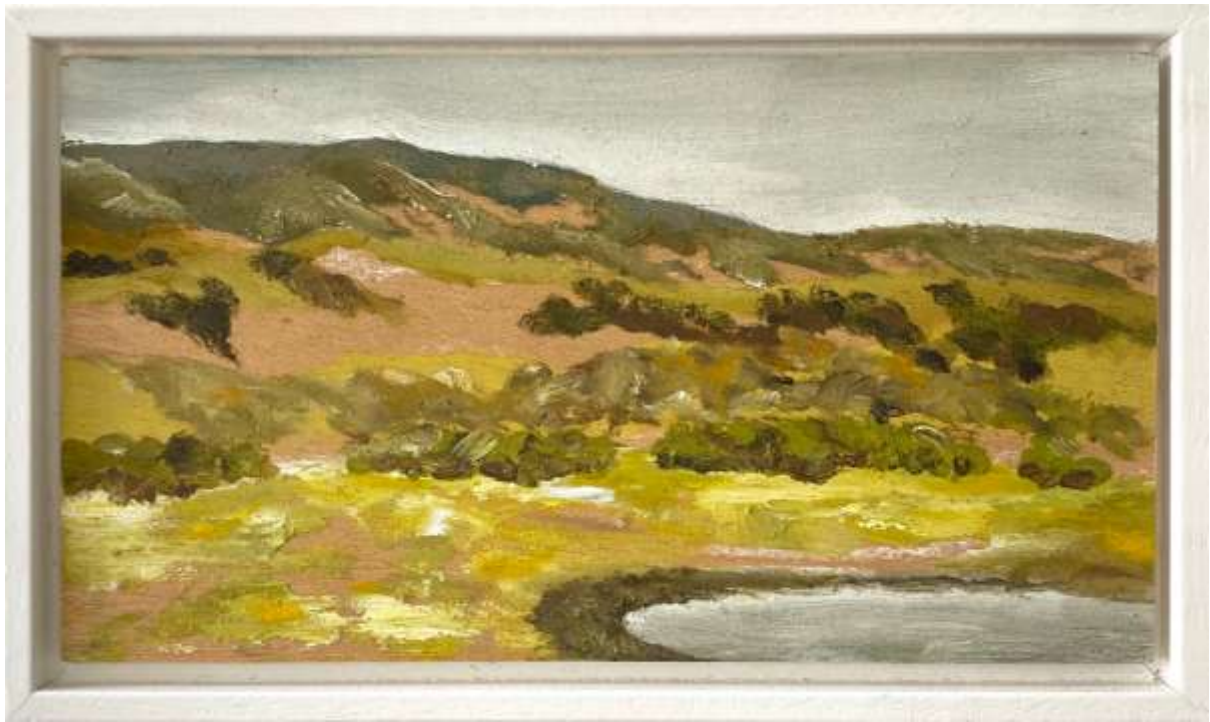
Larapinta III

\$850 Oil on canvas framed, 30 x 30cm



Larapinta IV

\$850 Oil on canvas framed, 30 x 30cm



Soft Country I

\$350 Oil on board framed, 13 x 23cm



Soft Country II

\$350 Oil on board framed, 13 x 23cm



Soft Country III

\$350 Oil on board framed, 13 x 23cm



Soft Country IV

\$350 Oil on board framed, 13 x 23cm



Soft Country V

\$350 Oil on board framed, 13 x 23cm



Soft Country VI

\$350 Oil on board framed, 13 x 23cm



Soft Country VII

\$3,300 Oil on board framed, 100 x 124cm



Heading Home I

\$880 Oil on board framed, 35 x 35cm



Heading Home II

\$880 Oil on board framed, 35 x 35cm



Heading Home III

\$880 Oil on board framed, 35 x 35cm



Heading Home IV

\$880 Oil on board framed, 35 x 35cm



Heading Home V

\$880 Oil on board framed, 35 x 35cm



Heading Home VI

\$880 Oil on board framed, 35 x 35cm



The Road Home I

\$800 Oil on canvas framed, 25 x 30cm



The Road Home II

\$800 Oil on canvas framed, 25 x 30cm



The Road Home III

\$800 Oil on canvas framed, 25 x 30cm



The Road Home IV

\$800 Oil on canvas framed, 25 x 30cm



The Road Home V

\$800 Oil on canvas framed, 25 x 30cm



Night Drive I

\$350 Oil on board framed, 15 x 20cm



Night Drive II

\$350 Oil on board framed, 15 x 20cm



Night Drive III

\$350 Oil on board framed, 15 x 20cm



Night Drive IV

\$350 Oil on board framed, 15 x 20cm



Around Willandra I

\$1,650 Acrylic on canvas framed, 55 x 70cm



Around Willandra II

\$1,650 Acrylic on canvas framed, 55 x 70cm



Around Willandra III

\$1,650 Acrylic on canvas framed, 55 x 70cm



Around Willandra IV

\$1,650 Acrylic on canvas framed, 55 x 70cm



Booti Booti I

\$2,200 Acrylic on board framed, 80 x 120cm



Booti Booti II

\$2,200 Acrylic on board framed, 80 x 120cm



Booti Booti III

\$2,200 Acrylic on board framed, 80 x 120cm