

Art2Muse

A vibrant art gallery

Located in the heart of Double Bay, Art2Muse Gallery attracts locals, designers, national and international art lovers who can also view and purchase artworks online. Established in 2001 by Katrina Hampton, Art2Muse Gallery represents a diverse range of artworks from 45 established artists at an affordable price. The gallery has been operating in Double Bay since 2008 with an exciting program of regular exhibitions and provides ongoing personalised service. In November 2014 Art2Muse Gallery was the first Australian gallery to be invited to participate in the Contemporary Istanbul Art Fair in Turkey.

We offer a home consultation service to advise on artworks. An initial visit to your home or office will include photographing the space and discussing your preferences. We will then produce a catalogue of recommended artworks superimposed on your walls as a preview before trying the pieces in your home. The \$99 consultation fee is then deducted from your first art purchase.

Here is a selection of available artworks by John Lacey. Please feel free to contact us for high resolution photographs and catalogues of artworks you are interested in and to discuss your requirements.

Katrina Hampton

Director Art2Muse Gallery

Katrina Hampton
Art2Muse Gallery
www.art2muse.com.au
357 New South Head Rd Double Bay Sydney
P. O. Box 211 Woollahra NSW 1350 Australia
Phone: 0424 809 849 Email: katrina.hampton@art2muse.com.au

John Lacey

South Australian artist John Lacey has been painting professionally since 2004. It was at this time he changed medium to oil, this was after painting impressionistic landscapes in watercolour and acrylic for the previous 20 years. The change to oil has seen him win numerous art prizes including the coveted Corporate Prize at the Victor Harbor Rotary Exhibition 2007.

Born 1947 in South Australia, John has always had a keen interest in art. Although not fortunate enough to study fine art, he worked as Motor Body Design Draftsman for many years before moving to Graphic Design, operating his own studio for around 20 years. During this period he painted most nights as a bit of a wind down from the daily pressures. Although a self-taught artist, John studied colour theory and a little illustration during his Graphic Design diploma.

A professional artist since April 2004, and with over thirty years experience painting in Oil, Acrylic and Watercolour mediums, John now concentrates mainly on oil, expressing himself in impressionistic and expressive contemporary landscape works on canvas.

John's early work saw him paint like many, in the impressionistic style, which he still enjoys today and can be often spotted painting en plein air studies. This is where the journey for his latest work often begins to develop. Having a keen interest in design and a gradual leaning toward the abstract, sees him simplify yet push the boundaries of the landscape without destroying the sense of place. This results in the viewer quite often being absorbed by the strong design, vibrancy or at times restfulness of colour, tone and texture.

As a self-taught artist, his work is ever evolving and has been sought after since the mid-eighties. He is represented in many private and corporate collections throughout Australia and internationally, and has won some twenty five awards, been a finalist in the Fleurieu Landscape Prize, Waterhouse Natural History Art Prize and the Heysen Prize. John has had some fifteen one person exhibitions and numerous shared shows in SA, Vic and WA galleries.

In 2009 John and his very supportive wife purchased 3 acres and hour south of Adelaide. Followed by design, build and establishing a large garden they are now living their dream in an eco-friendly home with studio and small gallery attached, located just south of Mt Compass, South Australia.

Achievements

Heysen Prize – Finalist 2012

Waterhouse Art Prize – Finalist 2008

Finalist in the Fleurieu Biennale Landscape Art Prize – 1998 & 2004

Awards

Alexandrina Art Prize – First Prize (acquisitive)

Yaccatracks Art Prize – Yankalilla – Third Prize & Peoples Choice – (2 different paintings)

St Peters Cathedral Art Exhibition – Best interpretation of Light 2012

Yorke Peninsula Art Exhibition – Second Prize 2012

Port Adelaide Rotary Art Exhibition – First Prize – 2010

Clare Rotary Club Art Exhibition – First prize – 2009

Wooden Boat Art Exhibition Goolwa SA – 2009 – Norm Bense Memorial Prize

Blackwood Rotary Art Exhibition – First prize – 2007

Victor Harbor Rotary Club Exhibition – First prize – 2007

Rotary Club of Flagstaff Hill Art Exhibition – First Prize – 2006

St Peter's Cathedral Art Exhibition – Peoples Choice Award – 2006

The Rotary Club of Clare (SA) Art Exhibition – Winner of Best in Exhibition – 2005

Clare Rotary Art Exhibition – Best Oil/Acrylic – 2004

Blackwood Rotary Art Exhibition – First Prize – 2004

Port Adelaide Rotary Art Exhibition – Second Prize – 2004

Barossa Fine Art Exhibition – Peoples Choice Award – 2003

Sorrento Art Exhibition (VIC) – Best Oil/Acrylic under \$800 – 2003

Port Adelaide Rotary Art Exhibition – First prize – Port Adelaide Section – 2003

Port Adelaide Rotary Art Exhibition – First prize – Port Adelaide Section – 2002

Portland (VIC) Rotary Exhibition – First Prize – Painting under \$800 – 2002

Mildura (VIC) Art Exhibition – First prize – Best Rural Landscape – 2002

Flagstaff Hill Rotary Art Exhibition – Third prize – 2002

Other Awards

Flagstaff Hill Rotary Art Exhibition Best Acrylic – 1997, 1998, 1999, 2000

Rotary Art Exhibition of Victor Harbor – Best Oil or Acrylic under \$500 – 1998

Glenelg Apex Art Exhibition Best Painting – Glenelg theme – 1999

Kiwanis Art Exhibition – Marion – Best Painting – 1998



Exhibition at Art2Muse Gallery 18 September – 1 October 2018

Launch 6pm – 8pm 21 September 2018



Summer Dreaming

\$9,500 Oil on canvas, 152 x 152cm



Standley Chasm

\$7,800 Oil on canvas, 122 x 152cm



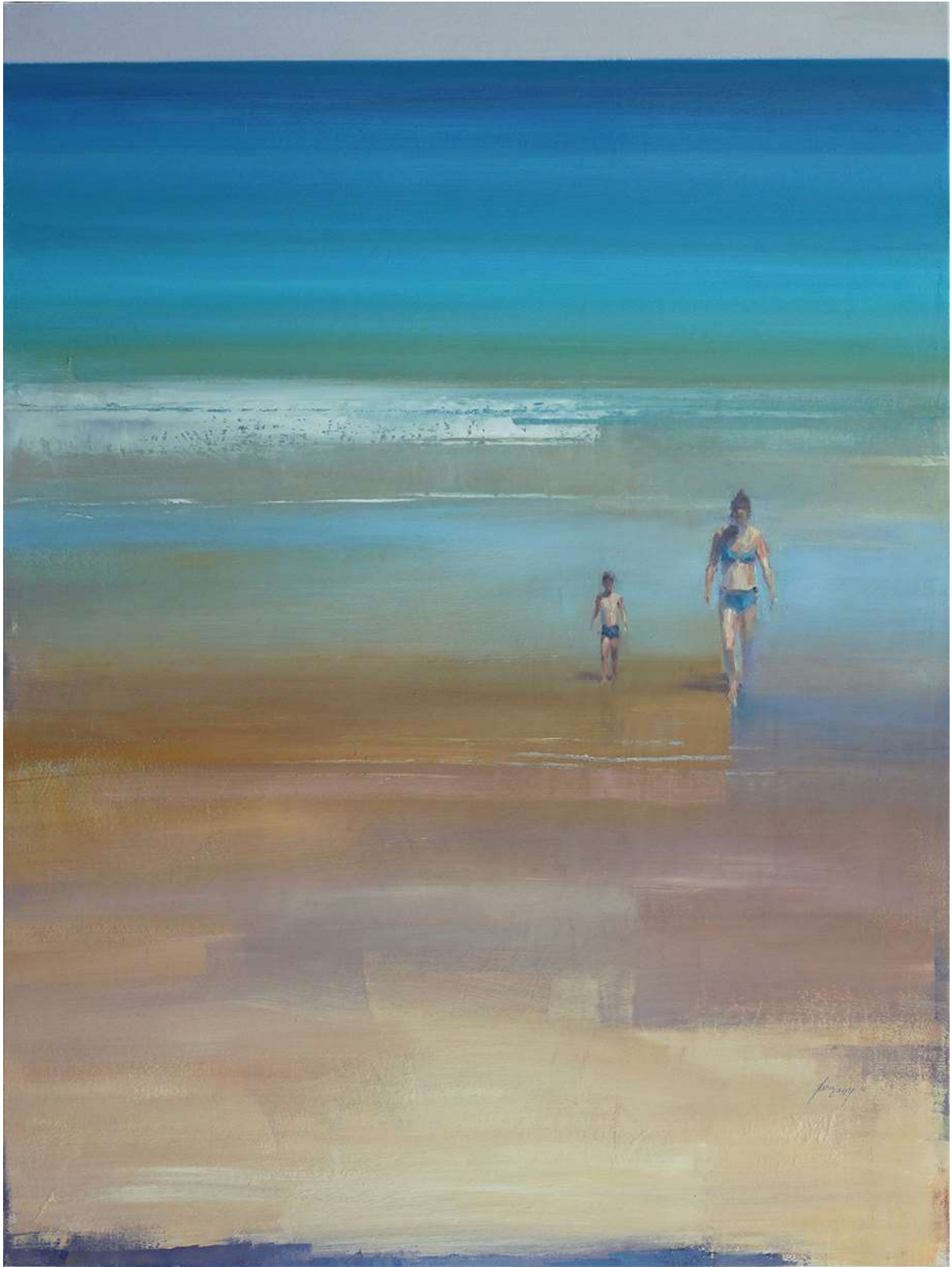
Cold Morning

SOLD \$6,500 Oil on canvas, 122 x 122cm



Winter's Eve

\$6,500 Oil on canvas, 122 x 122cm



After a Dip

\$5,500 Oil on canvas, 122 x 91cm



Winter's Contrast

\$4,500 Oil on canvas, 91 x 101cm



Colours of Ormiston Gorge

\$5,000 Oil on canvas, 101 x 101cm



Reflecting Ormiston Gorge

\$3,600 Oil on canvas, 91 x 91cm



Winter's Ochre Light

\$2,800 Oil on canvas, 61 x 91cm



Summer Moon

\$2,400 Oil on canvas, 61 x 61cm



Across the Lake

SOLD \$2,400 Oil on canvas, 61 x 61cm



Waterline

\$3,300 Oil on canvas, 101cm x 65cm



Willunga Light

\$3,900 Oil on canvas, 91cm x 91cm



Morning Reflections

\$4,200 Oil on canvas, 91cm x 91cm



Transition Katherine Gorge 2

\$3,300 Oil on canvas, 101cm x 65cm



Windjana Shower

SOLD Oil on canvas, 91cm x 106cm



Change of Season

\$3,000 Oil on canvas, 60cm x 91cm



Country Contrasts

\$4,200 Oil on canvas, 76cm x 101cm



Dales Gorge Sunset Diptych

\$7,000 Oil on canvas, 91cm x 183cm



Fleurieu Flyby

\$3,900 Oil on canvas, 65cm x 111cm



Fortescue study

\$3,900 Oil on canvas, 65cm x 111cm



Near Teal Flat

\$6,000 Oil on canvas, 91cm x 152cm



North Bungles Sunset

\$5,200 Oil on canvas, 91cm x 121cm



Wandering Through Autumn Diptych

\$6,500 Oil on canvas, 102cm x 152cm